

# HEALTH & SAFETY ALERT



## TBTC LOOP CABLE: PROTECTING THE TBTC LOOP CABLE WHEN FACILITATING WORKS IN THE TRACK FOUR FOOT AREA

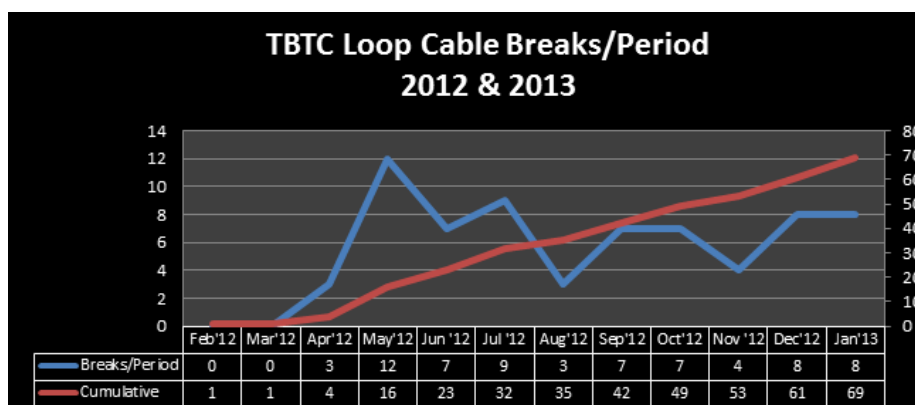
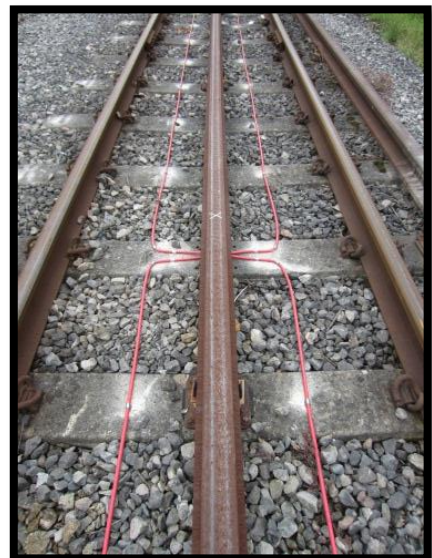
The following briefing note has come from our colleagues at Tubelines.

The TBTC Loop cable is a critical part of the new signalling system and must be protected from damage at all times. Any damage to the cable has the potential to disrupt the service and can cause significant financial and reputational damage to Tube Lines and its partners.

Due care must be taken to ensure that the work being facilitated in the four foot area does not damage the Loop cable and that all necessary precautions are taken to prevent any cable damage.

The volume of TBTC loop cable damage is **UNACCEPTABLE** and we all need to work together to address this concern.

When working in the four foot track area, you must ensure that you take all precautions to prevent any cable damage and also report any damaged loop cable immediately to the Tube Lines Fault Report Centre.



As part of this mandate, we ask that you follow the guidelines outlined below: This is mandatory and must be introduced with immediate effect.



# ◀ HEALTH & SAFETY ALERT ▶



[1] DO NOT WALK DIRECTLY ON TOP OF THE LOOP CABLE

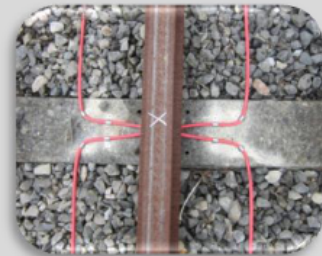
[2] ENSURE THAT ADEQUATE MITIGATIONS ARE IN PLACE TO PROTECT THE CABLE PRIOR TO INITIATING WORKS.

[3] ENSURE THAT YOUR TEAM IS BRIEFED AND ARE AWARE OF HOW IMPORTANT THE TBTC LOOP CABLE IS.

[4] DO **NOT IGNORE ANY DAMAGE TO THE LOOP CABLE**. REPORT ANY ACCIDENTAL CABLE DAMAGE TO THE TLL FRC IMMEDIATELY ON 0207 088 4470.

[5] IF YOU SEE ANY DAMAGE ON ROUTE TO YOUR WORK SITE OR AT YOUR WORK SITE, NOTIFY TLL FRC IMMEDIATELY ON 0207 088 4470

[6] AFTER COMPLETING YOUR WORKS, THE SPIC MUST CHECK AND CONFIRM TO THE 'PROTECTION MASTER' THAT THE CABLE IS FREE OF ANY DAMAGE PRIOR TO LEAVING SITE.



WHEN REPORTING A LOOP CABLE DAMAGE INCIDENT, PLEASE PROVIDE THE FOLLOWING DETAIL TO THE TUBE LINES FRC:

- FAULT REPORTED BY & CONTACT NUMBER:
- NEAREST STATION OR IN BETWEEN STATIONS X & Y:
- DIRECTION OF TRAVEL:
- LOOP NUMBER:
- TRACK CHAINAGE NUMBER IF AVAILABLE:
- CAUSE OF DAMAGE BASED ON WHAT YOU SEE:





# ◀ HEALTH & SAFETY ALERT ▶



EXAMPLES OF DAMAGED LOOP CABLE

