



# Quick guide

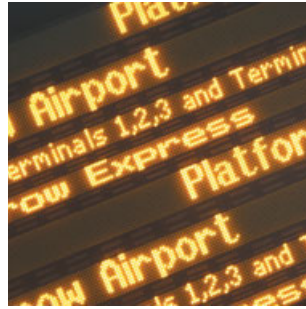


Crossing the Capital  
Connecting the UK

Crossrail will be one of the largest projects London has seen and will help towards improving the lives of thousands of people through new job opportunities, neighbourhood renewal and by connecting communities.



It will be fast, frequent and convenient. Journey times across the capital will be cut by up to half and with 24 trains per hour in the peak and 12 trains off-peak, you will not have to wait long between services. Whether your trip is for business or leisure, Crossrail will enable you to travel quickly and reliably into and across London.



## Progress

The construction of the new railway will need an Act of Parliament to be passed before it goes ahead. Before this happens, Committees in both Houses of Parliament will look closely at the plans and could make changes, if they think it necessary. This thorough process will ensure that the scheme is relevant and acceptable in helping London to grow as one of the world's leading cities and the UK economy to continue expanding. If Parliament approves, trains could begin running from 2013.

**“This is an investment that we cannot afford not to make. If we don't, then London will suffer as a result.”**

**Tony Blair**  
Prime Minister

**“The TUC fully supports Crossrail as an essential part of an integrated transport network, not just for London, but the entire South East.”**

**Brendan Barber**  
General Secretary, Trades Union Congress (TUC)

**“Crossrail is probably the most important investment decision that London faces in the decade.”**

**Canary Wharf Group**

## How to Petition Parliament

After Second Reading of the Bill in each House of Parliament, Parliament will set up Select Committees to consider the detail of the Bill and hear any petitions in support or opposition.

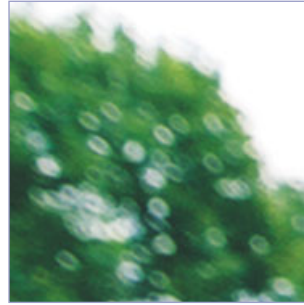
Individuals and organisations who might be affected by the proposals can submit petitions for the consideration of the Committees. Petitions must follow a particular wording and the Houses of Parliament can provide an explanation of the form of a petition on request. If you think you might be affected by the project and need more information, please call our helpdesk (24-hours, 7-days a week) on 0845 602 3813.

**“There is a clear transport case for Crossrail and we remain committed to the scheme.”**

**Alistair Darling**  
Transport Secretary

**“This is the single most important new piece of infrastructure for London.”**

**Confederation of British Industry (CBI)**



## Environment

Crossrail is committed to taking care of the environment as set out in our Environmental Policy. We have identified likely environmental impacts arising from the design, construction and operation of the proposals – where appropriate taking action to make them less intensive.

Crossrail has completed an Environmental Impact Assessment and is publishing an Environmental Statement. This reports the likely impacts, both positive and negative, of the construction and operation of the scheme. The scope and methodology statement for this process can be found on Crossrail's website [www.crossrail.co.uk](http://www.crossrail.co.uk)

**“Crossrail will bring billions of pounds in economic benefits and unlock powerful regeneration forces for the capital and the South-East.”**

**Michael Snyder**

Chairman

Policy & Resources Committee Corporation of London

## Information

We have listened to people's views on Crossrail in developing our proposals. We are continuing to listen and develop our plans with the help of local communities.

### Next steps

You can find out more about these plans in the 'Information Round' document.

### Do you want to know more?

Visit one of our information centres between February 10 and 19, 2005 when they are in your area. Details are available from the Helpdesk on 0845 602 3813 and on the website.

Visit our consultation microsite to see detailed information about all the proposed works along the Crossrail route. [www.crossrail.co.uk/consultation](http://www.crossrail.co.uk/consultation)



## Contact

Crossrail will be running information centres along the route between February 10 and 19, 2005.

Crossrail  
FREEPOST NAT6945  
London SW1H 0BR  
Email [helpdesk@crossrail.co.uk](mailto:helpdesk@crossrail.co.uk)  
[www.crossrail.co.uk](http://www.crossrail.co.uk)  
Helpdesk: 0845 602 3813 (24-hours, 7-days a week)

To request information about Crossrail in large print, Braille or audio cassette, please contact Crossrail as above.

If you would like information about Crossrail in your language, please contact Crossrail supplying your name and postal address and please state the language or format that you require.

আপনি যদি আপনার নিজের ভাষায় ক্রসরেল সন্ধান তথ্য জানতে চান তাহলে অনুগ্রহ করে ক্রসরেলের সাথে যোগাযোগ করুন। তাদেরকে আপনার নাম, ঠিকানা এবং কোন ভাষায় আপনি এটা চাচ্ছেন সেটা লিখে জানান।

Crossrail hakkında kendi dilinizde bilgi almak isterseniz, lütfen Crossrail ile temas kurarak, adınızı ve adresinizle hangi dil veya formatta bilgi istediğinizi bildirin.

Nếu quý vị muốn có tin tức về Crossrail bằng tiếng nói của quý vị, xin liên lạc với Crossrail cho biết tên, địa chỉ liên lạc bằng bưu điện cùng ngôn ngữ và khuôn khổ quý vị yêu cầu.

यदि आपको क्रॉसरैल के बारे में जानकारी अपनी भाषा में चाहिये, तो कृपया क्रॉसरैल के साथ सम्पर्क करें और अपना नाम, पता और कौन-सी भाषा या फॉर्मेट में चाहिये, इसके बारे में बतायें।

ਜੇਕਰ ਤੁਹਾਨੂੰ ਕ੍ਰਾਸਰੇਲ ਬਾਰੇ ਜਾਣਕਾਰੀ ਆਪਣੀ ਜ਼ਬਾਨ 'ਚ ਚਾਹੀਦੀ ਹੈ, ਤਾਂ ਕ੍ਰਿਪਾ ਕਰਕੇ ਕ੍ਰਾਸਰੇਲ ਨਾਲ ਸੰਪਰਕ ਕਰੋ ਅਤੇ ਆਪਣਾ ਨਾਂ, ਪਤਾ ਅਤੇ ਕਿਹੜੀ ਜ਼ਬਾਨ ਜਾਂ ਫਾਰਮੈਟ 'ਚ ਚਾਹੀਦੀ ਹੈ, ਇਸ ਬਾਰੇ ਦੱਸੋ।

જો તમને ક્રોસરેલ બાબત માહિતી પોતાની ભાષામાં જોઈતી હોય, તો મહેરબાની કરી ક્રોસરેલ સાથે સંપર્ક સાધો અને પોતાનું નામ, સરનામું અને કઈ ભાષા અથવા ફોર્મેટમાં જોઈએ છે, તે બાબત જણાવો.

يرجى الاتصال بهم إذا كنت ترغب في الحصول على معلومات عن «كروسريل» (Crossrail). يرجى الاتصال بهم ذكراً اسمك وعنوانك والرقم البريدي واللغة أو الشكل الذي تطلبه.

如果你想獲得用你的語言書寫的有關Crossrail的資訊，請提供你的姓名，住址和要求的語言或格式。

Αν επιθυμείτε πληροφορίες για το Crossrail στη γλώσσα σας, επικοινωνήστε με την Crossrail αναφέροντας το όνομά σας, την ταχυδρομική διεύθυνση και τη γλώσσα ή η μορφή στην οποία επιθυμείτε να τις λάβετε.

اگر آپ کو کراس ریل کے بارے میں اپنی زبان میں معلومات درکار ہیں تو برائے نمبر ہائی کراس ریل سے رابطہ کریں اور اپنا نام، گھر کا پتہ اور جس زبان یا جس شکل میں آپ کو یہ معلومات درکار ہیں کے بارے میں بتائیں۔

Haddii doonaysid warbixin ku saabsan Crossrail oo ku qoran luqadaada faclan la soo xiriir Crossrail adoo dhiibaya cinwaankaaga boostada faclan noo sheeg luqadda iyo qaabka aad u baahan tahay.

Faahfahin cidda lala xiriirayo waa:



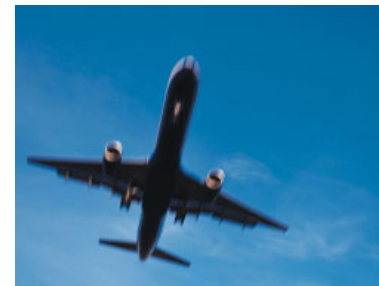
**Crossrail trains**  
 Crossrail trains will be 200m long (600 feet) and consist of 10 carriages, giving passengers more space than on London Underground trains. Each train can carry 1500 seated and standing passengers at peak times.



**Maidenhead**  
 Major changes are planned in and around Maidenhead station to provide better facilities for passengers. The plans include a rearranged forecourt, new ticket hall, pedestrian underpass and improved access to the platforms.



**Bridges**  
 Sixteen bridges between Burnham Station and Stockley Flyover will be upgraded so that overhead electrification can be put in place. The new bridges will also provide improvements for pedestrians, cyclists and other road users.



**Heathrow**  
 Crossrail is designed to fit in easily with the existing rail networks and ticketing systems. Services planned to and from Heathrow will improve what is currently available by increasing travel opportunities for commuters, leisure travellers and people who live and work in the area.



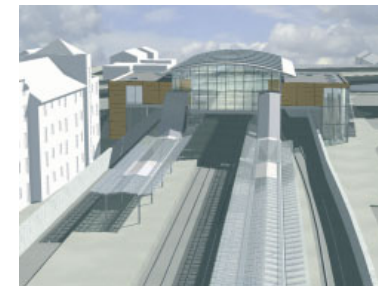
**Ealing Broadway**  
 Crossrail is proposing to redevelop some key surface stations, like Ealing Broadway which will provide a new, high quality interchange between Crossrail, First Great Western Link and London Underground. Plans include a new ticket hall and lifts for step free access from street to platforms.



**New underground stations**  
 Seven new underground stations will be built to make travelling easier and convenient for more people. The platforms will be at the same level as the train floor making it easier and safer for people to get on and off. Altogether, the trains will be stopping at 35 stations.



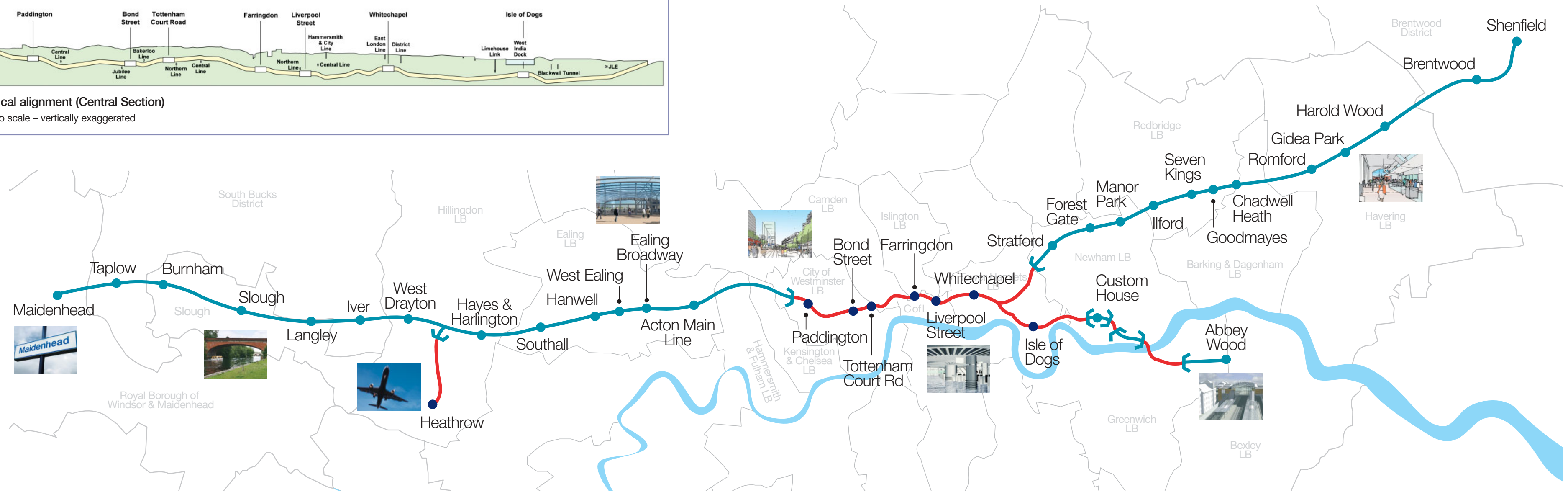
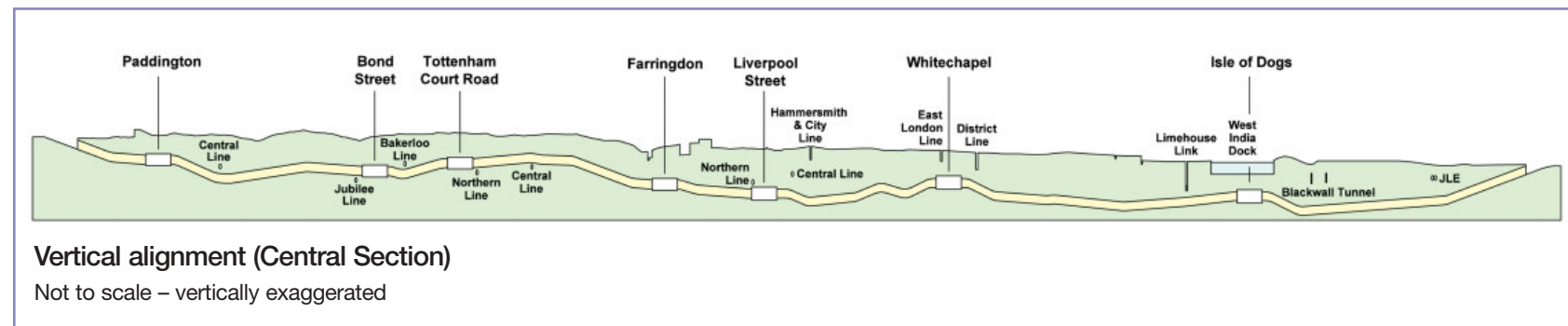
**Liverpool Street**  
 The Liverpool Street Crossrail station will be partly below the new Moorhouse building at Moorgate, designed by Lord Foster. The ventilation shaft beneath the building is 36m deep and will provide air to the Crossrail tunnel, cooling it in hot weather.



**Abbey Wood**  
 The new station planned at Abbey Wood will be an important interchange between Crossrail, the North Kent Line, Greenwich Waterfront Transit and local bus services. Station facilities will be built above two island platforms including lifts, a new ticket hall and improved access for pedestrians.



**Romford**  
 A new station will be built at Romford Station to make rail travel easier. A new ticket hall will be built with new entrances from the street, lifts and stairs to platforms.



- Existing station
- New station
- Surface line
- Tunnel
- ~ Portal (tunnel entrance and exit)

### Quick guide to Crossrail

Crossrail is an exciting and visionary new railway proposal for London, the South East and the UK. It will make travelling in the area easier and quicker. The plan is for trains to start running in 2013.

It will be one of the largest engineering projects in Europe, creating thousands of jobs in construction and in the longer term through regeneration.

The plan is for 24 trains per hour in peak times in each direction through central London, and 12 trains per hour off-peak, making it easier to travel into and across the capital. More than 160,000 passengers will be carried in the morning peak period. Trains will travel at up to 100mph on the surface and 60mph in tunnels. The best in available rolling stock technology will be used, including air-conditioned carriages.

Crossrail services will fit in with existing rail, bus and airline transport to create an integrated transport system. With new trains and remodelled stations it will make it possible for more people to make more journeys, more easily.

The Government has costed the project at £10 billion, including £3 billion contingencies.

### Crossing the Capital Connecting the UK

Crossrail will bring one and a half million more people to within 60 minutes reach of London's key business areas including Canary Wharf (interior of projected new underground station pictured right).

For safety reasons, the London Fire and Emergency Planning Authority require tunnel access shafts, to be provided at no more than one kilometre apart.

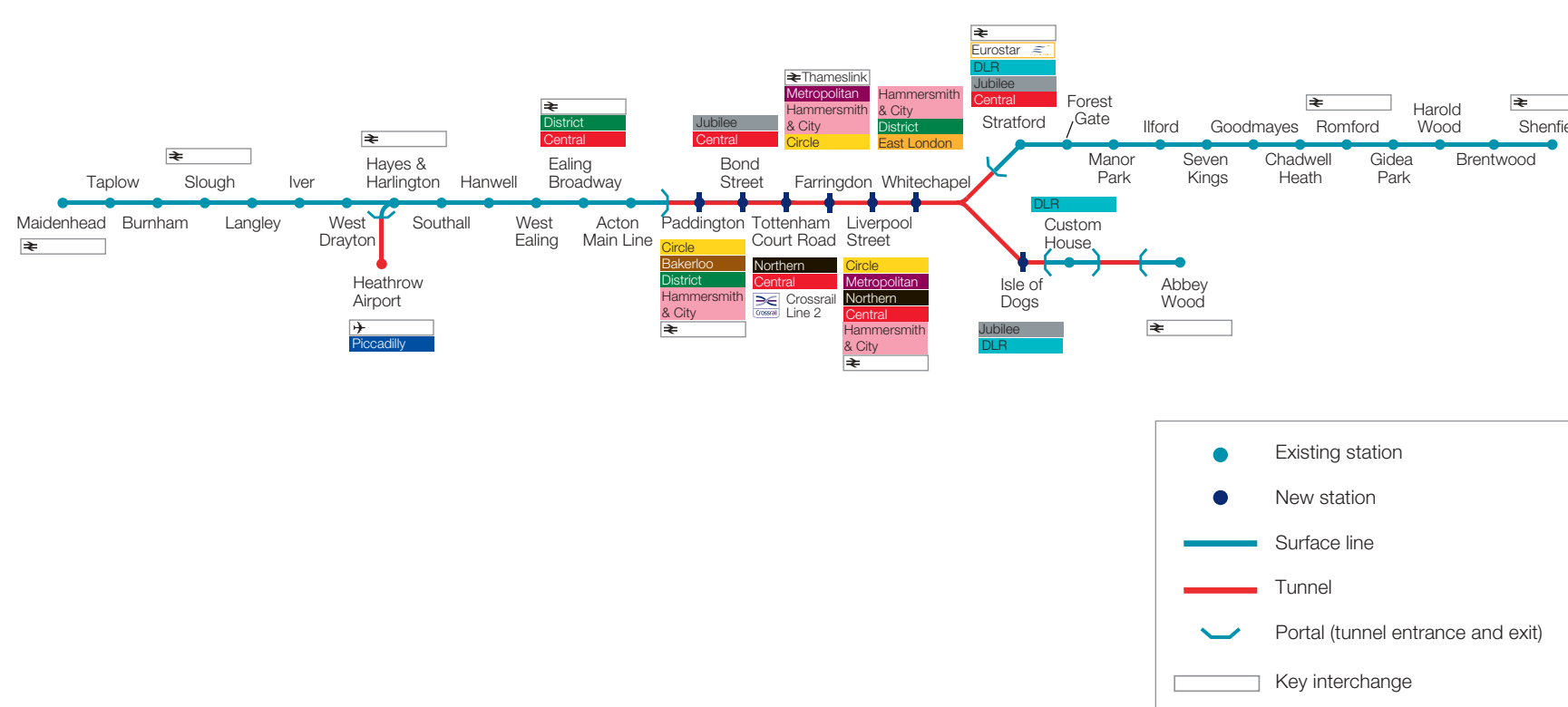
Crossrail has been digging boreholes along the line 1 route to check on the ground conditions through which the tunnels will pass.

Crossrail is paying particular attention to the needs of those with mobility difficulties by designing new stations with 'step free' access. Proposals include tactile surfaces, high visibility features and loud speaker announcements.

According to estimates made by the Greater London Authority, Crossrail will contribute £19bn to the British economy. It has a cost benefit of 2:1. This means that for every £1 spent, there will be a return in various benefits to the community to the value of £2.

During construction it will be necessary to call on the expertise of engineers from around the world.

### Crossrail connections





Crossrail is an exciting and visionary new railway proposal for London and the South-East. It will make travelling in the area easier and quicker.